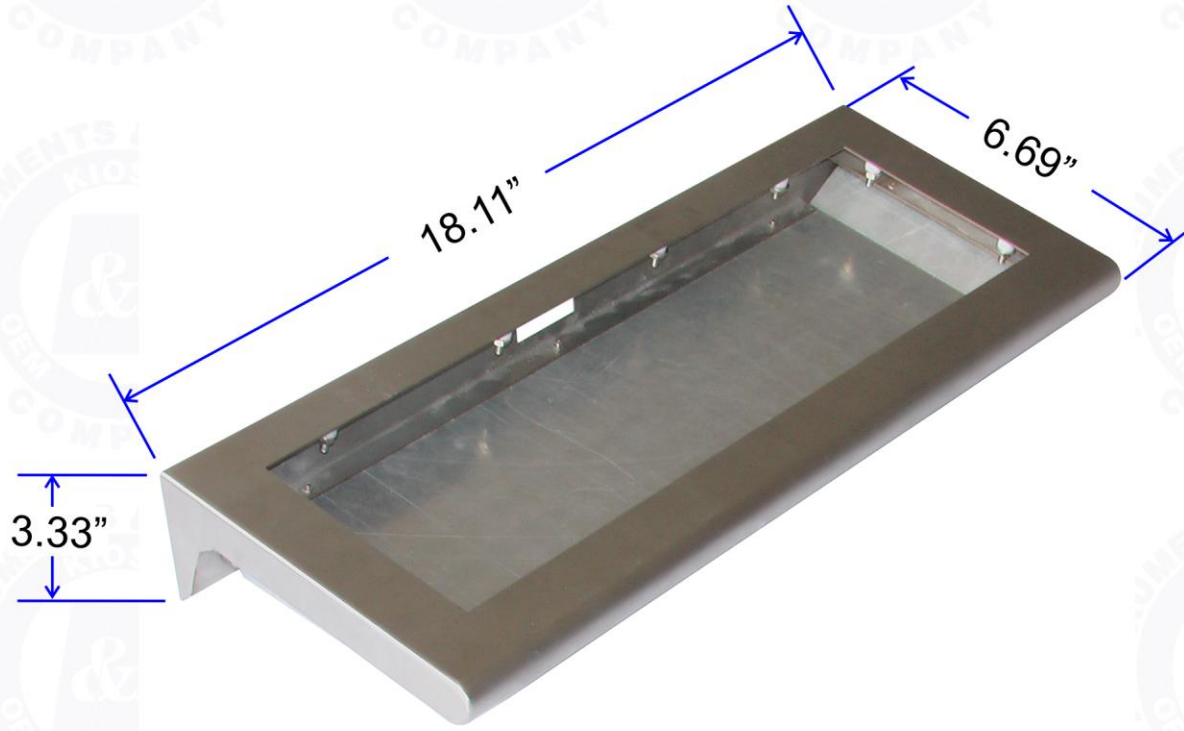


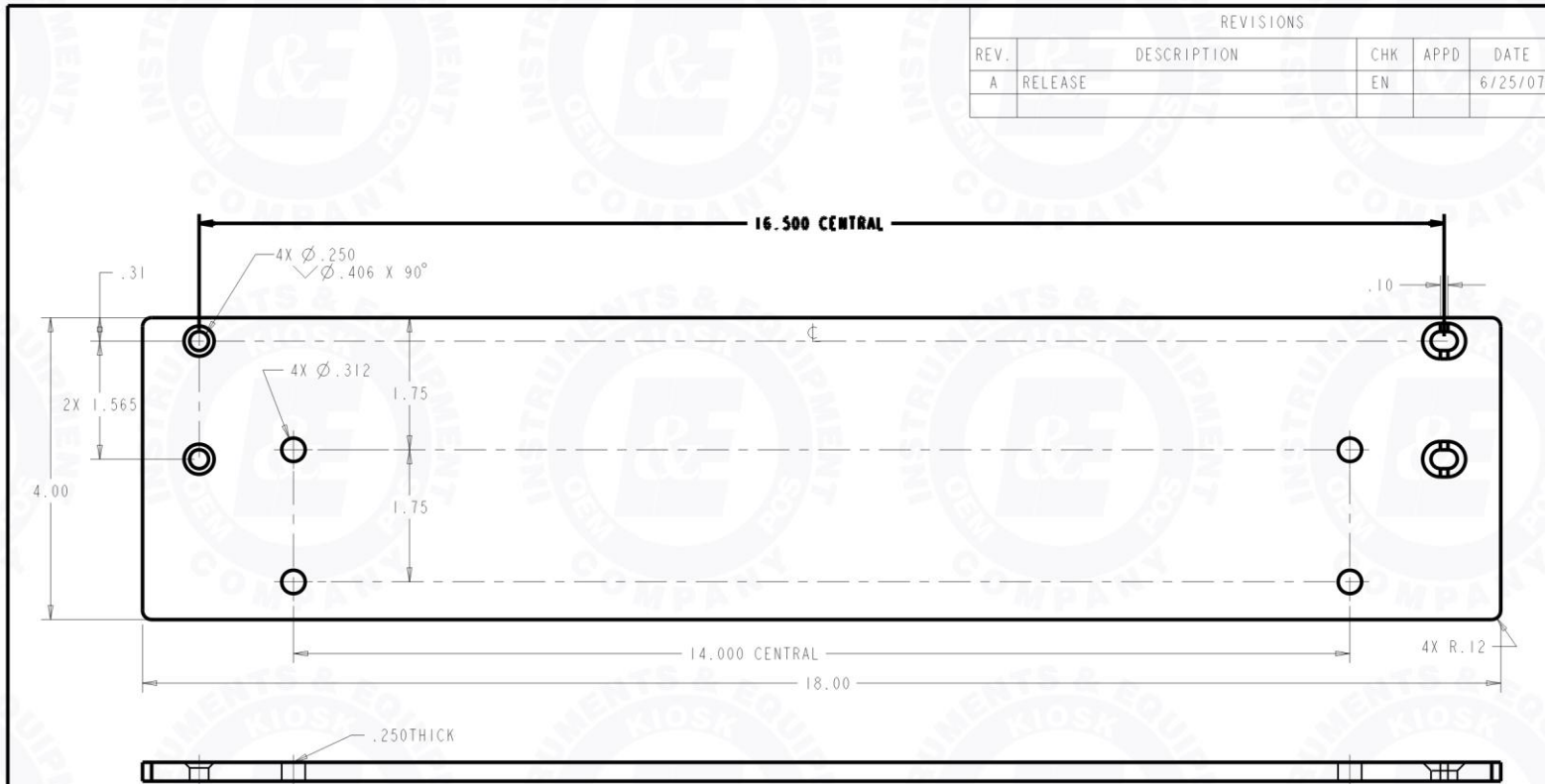
Keyboard Tray Overall Dimensions



REVISIONS				
REV.	DESCRIPTION	CHK	APPD	DATE
A	RELEASE	EN		6/25/07

- NOTES:
UNLESS OTHERWISE SPECIFIED
1. MATERIAL: .250 THK ALUM, 6061
 2. BEND ANGLES 90° ±1°
 3. INSIDE BEND RADIUS: .040 MAXIMUM
 4. MINIMUM BEND RELIEFS REQUIRED
 5. BREAK SHARP EDGES: .015K MAX
 6. MASK ALL THREADS
 7. PRIME PER PURCHASE ORDER
 8. PAINT ALL SURFACES PER PURCHASE ORDER

THIRD ANGLE PROJECTION	PRODUCT LINE:		INSTRUMENTS & EQUIPMENT, CO.	
TOLERANCES:			TITLE:	
2 DEC PLCS: ±.015				
3 DEC PLCS: ±.005				
ANGLES: ±1°				
DEBURR ALL EDGES				
	DRAWN:			
	EN	6/25/07		
	CHECKED:			
	APPROVED:			
FINISH: SEE NOTE 7 & 8			REV: A	
MATL: SEE NOTE 1			C	SCALE: 1/1
			ISSUED:	SHEET 1 OF 1



REVISIONS				
REV.	DESCRIPTION	CHK	APPD	DATE
A	RELEASE	EN		6/25/07

- NOTES:
UNLESS OTHERWISE SPECIFIED
1. MATERIAL: .250 THK ALUM, 6061
 2. BEND ANGLES 90° ±1°
 3. INSIDE BEND RADIUS - .040 MAXIMUM
 4. MINIMUM BEND RELIEFS REQUIRED
 5. BREAK SHARP EDGES .015R MAX
 6. MASK ALL THREADS
 7. PRIME PER PURCHASE ORDER
 8. PAINT ALL SURFACES PER PURCHASE ORDER

THIRD ANGLE PROJECTION TOLERANCES: 2 DEC PLCS: ± .015 3 DEC PLCS: ± .005 ANGLES: ± 1° DEBURR ALL EDGES		PRODUCT LINE:		INSTRUMENTS & EQUIPMENT, CO.	
FINISH: SEE NOTE 7 & 8		DRAWN: EN 6/25/07			
MATT: SEE NOTE 1		CHECKED:		REV: A 41000252	
		APPROVED:		C SCALE: 1/1 SHEET 1 OF 1	
		ISSUED:			